



## The PBC Library Plus Project

*All donations to the PBC Building Fund are tax deductible.*

After many discussions with school representatives and the PBC P&C, the Department of Education have completed the design for a new library and classrooms building for completion in late 2019.

The three-storey building provides a huge covered area at ground level for students and on the next level, a brand-new library with the latest IT support and a wing of collaborative learning spaces. The top level has nine general learning areas, some of which are double in size and can be opened up to create expansive spaces for a range of teaching layouts, an examination hall, teacher-training area for events run by students, the school or the community.

These extra attributes of size, flexibility, and catering capacity will add about \$1m to the \$9.3m project, but it will provide a modern, high quality, educational environment that supports each of our students to achieve their potential.

The Library Plus building with its dramatic roof and atrium, open to a renovated landscaped forecourt. It will bring a heart to the PBC campus, in turn evoking civic pride in our students and drawing respect from our wider community, providing an environment that lives up to our school motto "Nil Sed Optima", nothing but the best.

Those who donate as part of our "PBC Library Plus Donation Program" will be acknowledged within the new Library Precinct as follows:

- Gold – for donations over \$10,000
- Silver – for donations over \$5,000
- Bronze – for donations over \$1,000

*Donations can be made by Direct Payment into School Bank Account, details below:*

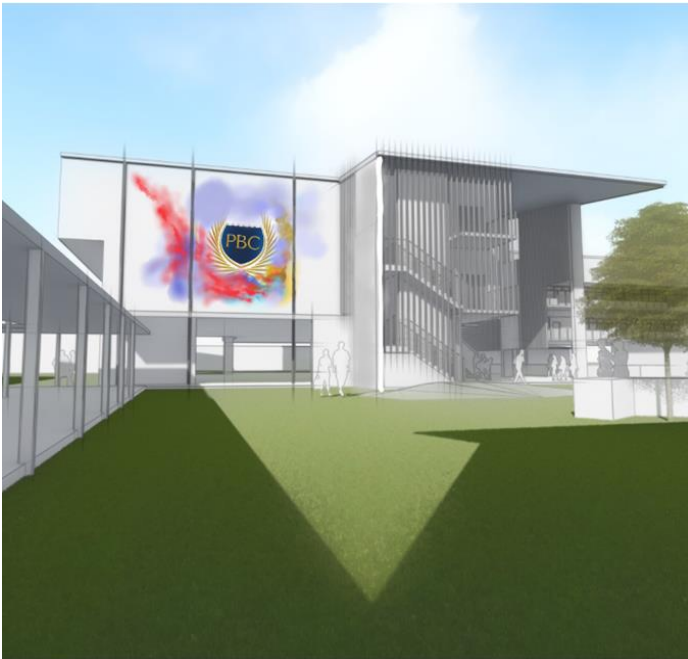
<b>School's Bank Account:</b>	<b>PALM BEACH CURRUMBIN SHS</b>
<b>General A/C:</b>	CBA Branch <b>Burleigh Heads</b>
<b>BSB Number:</b>	<b>064-404</b>
<b>Account Number:</b>	<b>00090303</b>
<b>Reference/Details:</b>	Include your name / company (first initial/last name <u>or</u> company name) " <b>your name 2019 Building Fund</b> " so that your payment can be recorded correctly.
<b>Receipt required:</b>	If you require a receipt, please email the details of your payment to <a href="mailto:alliance@pbc-shs.eq.edu.au">alliance@pbc-shs.eq.edu.au</a> and we will forward the receipt to you.

*For any enquiries about sponsorship, donations, bequests and the project overall may be directed to Heidi Wallace, Marketing and Communications, email: [Alliance@pbc-shs.eq.edu.au](mailto:Alliance@pbc-shs.eq.edu.au).*

Please see over the page for some visuals of our new Library Plus precinct.



## The PBC Library Plus Project



*North Face*



*East Face*



*Looking north from inside new Library*



*This is the north west corner*