



FREQUENTLY ASKED QUESTIONS

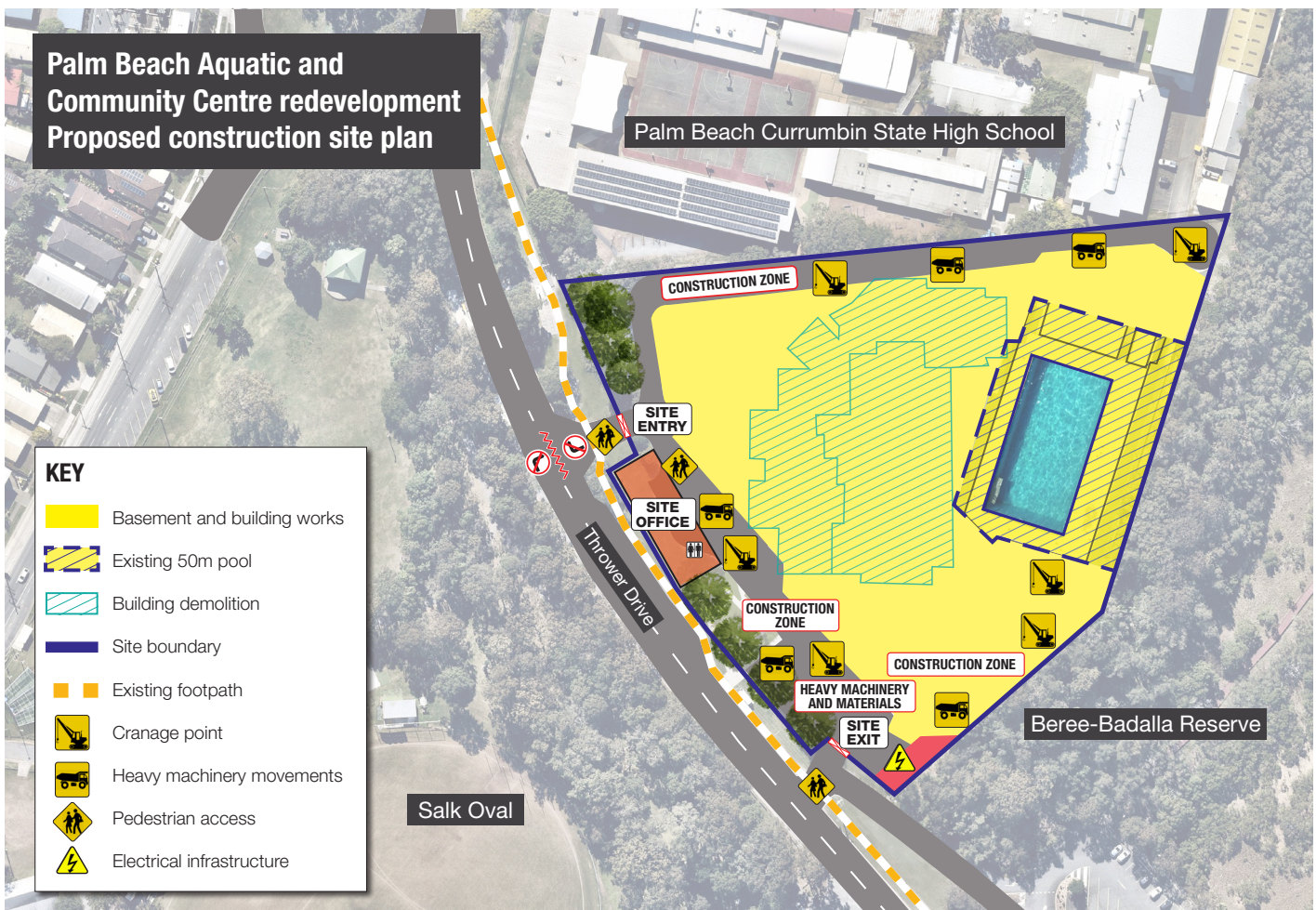
Your questions and answers about Palm Beach Aquatic and Community Centre redevelopment

We're transforming the Palm Beach Aquatic Centre into a vibrant and contemporary destination for the southern Gold Coast. The revitalised aquatic and new community centre will service the community for the next 50 years. The extent of the construction works can be seen in the proposed construction site plan.

The project	
When will Palm Beach Aquatic and Community Centre reopen?	The centre will re-open early 2024 with dates yet to be confirmed.
Which company is responsible for the redevelopment?	The City is delivering the project and has engaged a broad team of consultants and contractors for design and construction. Following project completion, the facility will be handed back to the City in readiness for an early 2024 opening to the community.
Who designed the redevelopment?	Leading architects Liquid Blu and Cox have teamed up to design this vibrant new destination for the southern Gold Coast. They have extensive experience in the design of major aquatic and sport centres.
Exactly what will the community get with the redevelopment?	<p>Along with the existing 50 metre outdoor pool, the redevelopment will see a new indoor heated warm water program pool and new indoor heated learn to swim pool. There will be an additional outdoor heated 25 metre pool and an outdoor all-abilities water play with interactive features. That's five pools in total.</p> <p>The fitness centre will be larger with an, indoor equipment room, group fitness space and dedicated amenities.</p> <p>There will be a new community centre including a large community hall with breakout courtyard, smaller multipurpose spaces, meeting rooms and dance studio. All of these spaces will be hireable.</p> <p>There will be a centrally located café with indoor and outdoor seating options and a new creché.</p> <p>The centre will integrate landscape with the pool concourses and includes terraces, shade and lawns.</p> <p>In addition to a centrally located drop off zone at the front of the centre, car parking will move underground, have more spaces and lift access to the aquatic and community centre.</p> <p>The Palm Beach Aquatic and Community Centre project page located at cityofgoldcoast.com.au/pbacc is the best place to visit to stay up to date with the redevelopment.</p>
When Palm Beach Aquatic and Community Centre reopens, will it be run by the City of Gold Coast or by an outsourced management contract?	The centre will reopen under City of Gold Coast management.

PALM BEACH AQUATIC AND COMMUNITY CENTRE - Frequently asked questions - continued

Construction and impacts	
Who is building the new centre?	Badge Constructions has been appointed managing contractor. They are responsible for safety on the site and any construction activity that occurs on site.
Why will the redevelopment take almost two years to complete?	The size and scale of the redevelopment will see major demolition and construction. With new carparking going below ground, this process alone will mean extensive excavation and earthworks which will take place under the majority of the new buildings and aquatic area.
Why did you close the centre and pool when there is no activity on site?	There is a lot of activity to prepare the site before you see any major construction on site. Managing contractor Badge Constructions will secure the site, establish construction compounds, undertake detailed site investigations and establish temporary services connections before main demolition commences in August 2022.
What will the first major construction activity be?	The first major activity will be demolition of the existing centre. This will be followed by bulk earthworks for the underground carparking. There will be heavy construction activity at this time with impacts including noise, dust, vibration, building debris movement, and water spray for dust suppression. There will be frequent heavy vehicle movements, so please take care as you travel or move through the area.
What impacts can I expect during the piling activity?	The piling methodology has been selected to minimise impacts to the adjacent Palm Beach Currumbin State High School and nearby residents and businesses. The Palm Beach Aquatic and Community Centre project page at cityofgoldcoast.com.au/pbacc is the best place to visit to stay up to date with the redevelopment.



PALM BEACH AQUATIC AND COMMUNITY CENTRE - Frequently asked questions - continued

Parking and access	
I am a service provider to Palm Beach Currumbin State High School. How do I access the school?	The school will communicate directly with its existing providers about arrangements. Badge Constructions will be responsible for safety on the construction site and will manage access accordingly.
Can I still drop my child at the side gate to Palm Beach Currumbin High School?	There will be no public access to Palm Beach Currumbin State High School via the side gate to the Aquatic Centre from Sunday 29 May 2022.
Can I still use the parking at the aquatic centre?	No. The carpark will be closed from Sunday 29 May 2022 until the new centre opens in early 2024.
Will there be changes to the speed limit on Thrower Drive?	There may be changes to the speed limit on Thrower Drive, in accordance with safe work practices. Please travel within the signed speed limit.
Will the pedestrian access along Thrower Drive change?	The pedestrian and cycle access along Thrower Drive will be maintained. However, there may be some traffic control measures during times of heavy vehicle movements or deliveries to the construction site. Please follow the instructions of traffic controllers and be aware that construction traffic will be moving around the area
Can I use the boat ramp?	Yes. The boat ramp will remain open and access for vehicles and boat trailers maintained during construction.
Can I access Beree Badalla boardwalk?	Yes. The boat ramp car park and footpaths will remain open for pedestrians during construction.
Will the Palm Beach Farmers' Market still operate?	Yes. You can enter the market via the school's entrances from Thrower Drive. There will be no access via the gate between the high school and the construction site.
I am a stall holder at the Palm Beach Farmers' Market. How do I access the school grounds?	Please contact the market organiser.
Vegetation and fauna management	
Will any trees be removed during construction?	Any vegetation works will be undertaken in accordance with approvals.
What is happening with the Poinciana at the entrance?	The poinciana tree at the site entrance will be pruned during site set up to protect it during construction.
Jobs and trade enquiries	
I am looking for trade/construction work. Who do I contact?	The work is sub-contracted. To find out more contact PBACC.jobs@badge.net.au
I have a business and would like to be a sub-contractor on the project. Who do I contact?	Badge Constructions is the managing contractor who will handle all trade, equipment and materials supplies. You can contact Badge via pbacc.icn.org.au
How do I apply for a job at the new centre when it opens?	The recruitment process for new positions at the redeveloped Palm Beach Aquatic and Community Centre will commence late-2023.
Contact	
Who can we contact regarding the development?	The Palm Beach Aquatic and Community Centre project page located at cityofgoldcoast.com.au/pbacc is where you can: <ul style="list-style-type: none"> • learn more about the background of this project • get a sneak peak of the new facilities • subscribe to updates, and • download a variety of fact sheets. For enquiries about the redevelopment, email the City Projects Unit at cityprojectsunit@goldcoast.qld.gov.au

PALM BEACH AQUATIC AND COMMUNITY CENTRE - Frequently asked questions - continued



Palm Beach Aquatic and Community Centre concept design.

Current facilities	What's new
50 metre pool	1. Retained. Closed during construction and reopened with the new facility.
Warm water program pool	2. Much larger warm water program pool with ramp, water wheelchair and hoist access. Improved amenities nearby. Separated from the learn to swim with visual and sound treatments to maximise privacy.
Learn to swim	3. Heated indoor learn to swim pool with teaching ledge, ramped access and family change facilities.
Fitness centre	4. Larger fitness centre with outdoor fitness terrace, indoor equipment room and group class space. Dedicated amenities.
Kiosk	5. Cafe, open to the public and centrally located, with indoor/outdoor options – servicing both aquatic and community centre areas.
Outdoor car parks	6. Increased number of car parks located under cover.
Flat, underutilised grassed area	7. Integrated landscape with pool concourses, landscaped public podium, terraces and lawns.
Restrictive access through small foyer	8. More generous arrival experience, co-located with cafe.
Creché	9. New and improved creché.
New offerings	10. Community centre including multipurpose spaces, meeting rooms and dance studio.
	11. 25-metre heated outdoor pool.
	12. Outdoor all abilities water play.
	13. New Changing Places change room for all abilities.
	14. Lawns and terraces for events and carnivals.

For more information

Project team

P 07 5581 7747

E cityprojectsunit@goldcoast.qld.gov.au

W cityofgoldcoast.com.au/pbacc